

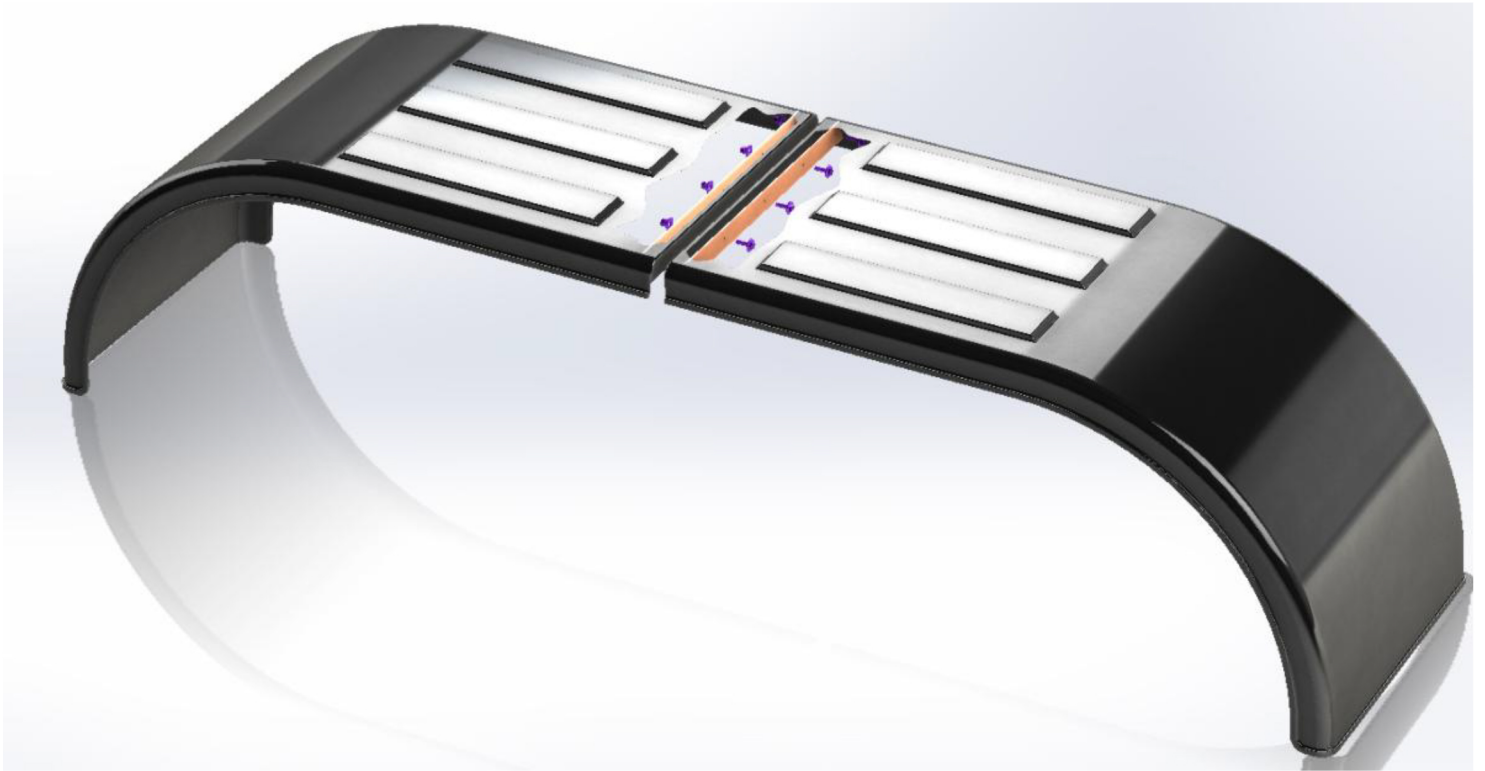
USPHT-JK01

Full Tandem Fitting Guide

Each kit contains enough fixings to make one Full Tandem

Half Tandem Joining Kit contents: 2 x 1/8" Drilled Aluminum plates -- 5 X 1/4" x 1 1/8" Bolts
- 5 x 1/4" Nyloc Nuts - 10 x Washers to suit

- Align the 2 straight ends of the 1/2 tandems and secure in the correct position using Clamps.
- Line the Aluminum plates provided to the inner lip of the tandems and mark drill guides
- Using a 5/16 Drill bit, drill 5 equally spaced holes through both of the secured tandem ends.
- Using the supplied fixings bolt the 2 half tandems together (Please use washer on each side of the fixing).
- Tighten the bolts/nuts to a setting of 10 foot pounds



***** We advise that Full Tandems should be fitted with 3 fixing stays positioned as the drawing On the Reverse*****

USPHT-JK01

Full Tandem Fitting Guide

Recommended Fitting for Full Tandem to Truck

